

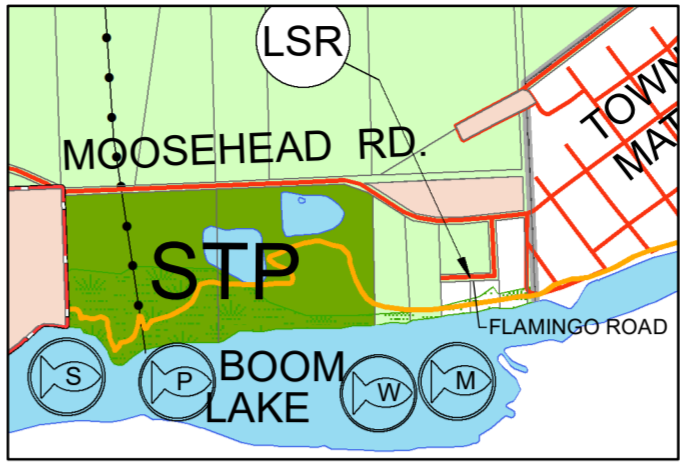
ZONING BY-LAW FOR THE  
EAST NIPISSING PLANNING AREA FOR  
The Corporation of the  
Municipality of Mattawan ONT

SCHEDULE "A"  
TO  
BY-LAW No. 2003-009

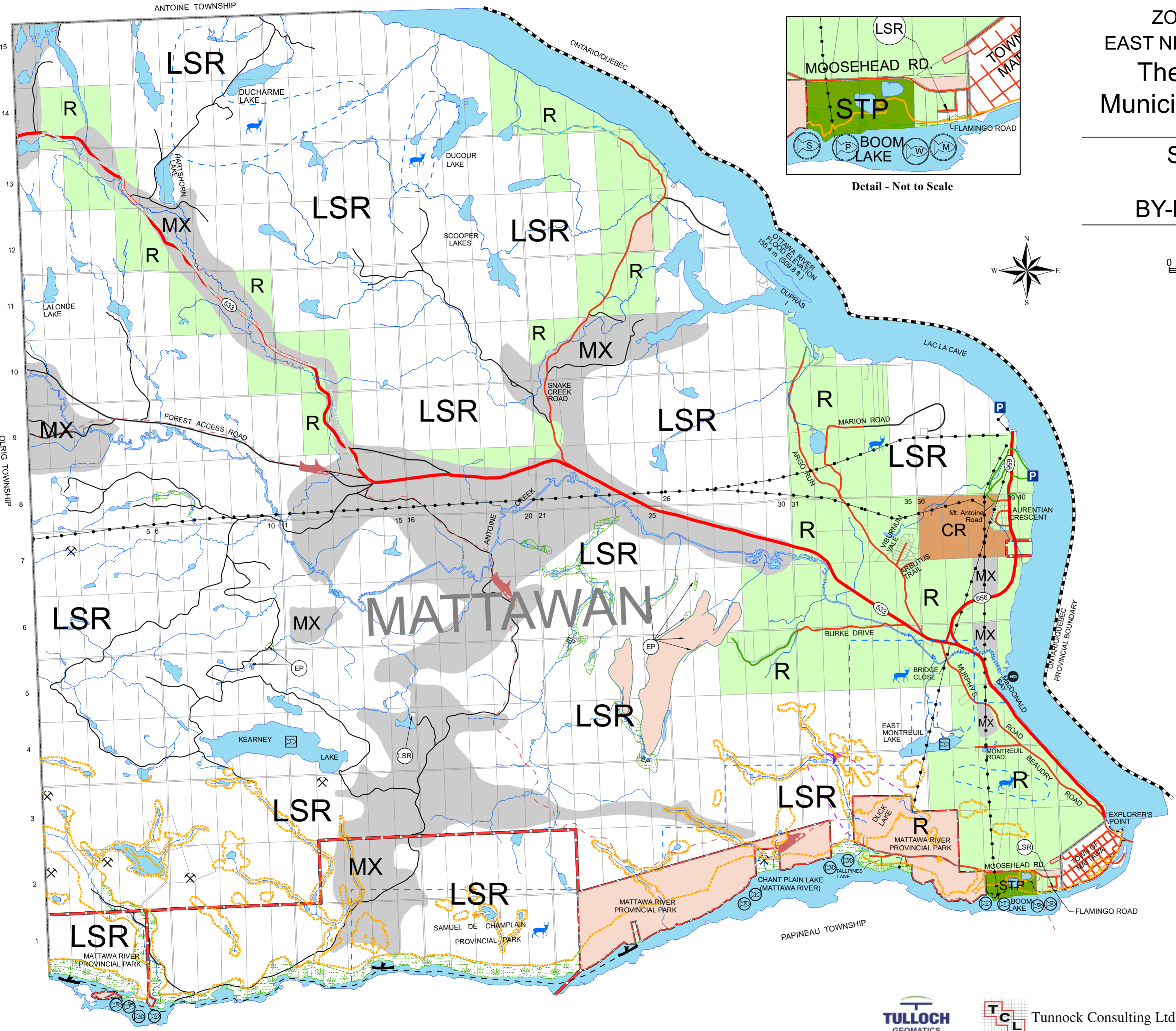
December, 2021

SCALE  
2000

4000 metres



Detail - Not to Scale



**Legend**

**Natural Heritage Features**

- Waterfowl Concentration Area
- Deer Yard
- Moose Wintering Area
- Moose Aquatic Feeding Area
- Warm Water Habitat
- Largemouth Bass
- Muskellunge
- Pike
- Smallmouth Bass
- Walleye
- Sturgeon
- Cold Water Habitat
- Atlantic Salmon
- Brook Trout
- Lake Trout
- Rainbow Trout
- Splake
- Brook Trout Spawning Area
- Heronry
- Osprey
- Loon

**Transportation and Infrastructure Corridors**

- Provincial Highway
- Township Roads (Yearly Maintained)
- Township Roads (Seasonally Maintained)
- Unassumed Roads
- Resource Access Roads
- Private Roads
- Unopened Road Allowance
- Rail Line
- Ontario Hydro Transmission Line
- Snowmobile Trail
- Proposed Controlled Access Highway

**Zones**

- Rural
- Limited Services Rural
- Commercial / Recreational
- General Industrial
- Heavy Industrial
- Mineral Aggregate Resource
- Waste Management Facility
- 500m Influence Area
- Sewage Treatment Plant
- Environmental Protection

**Natural and Human Made Hazards**

- Mine Hazard
- Flood Line
- Flood Elevations: Specific Elevations Shown on Schedule

**Other Features**

- Canoe Trail
- Township Boundary
- Public Access Point
- Provincial Park Boundary
- Regulated Lines



Parcel limits and township Lot and Concession fabric are derived from 1:20,000 scale Ontario Basic Mapping and DO NOT represent legal survey positioning.